

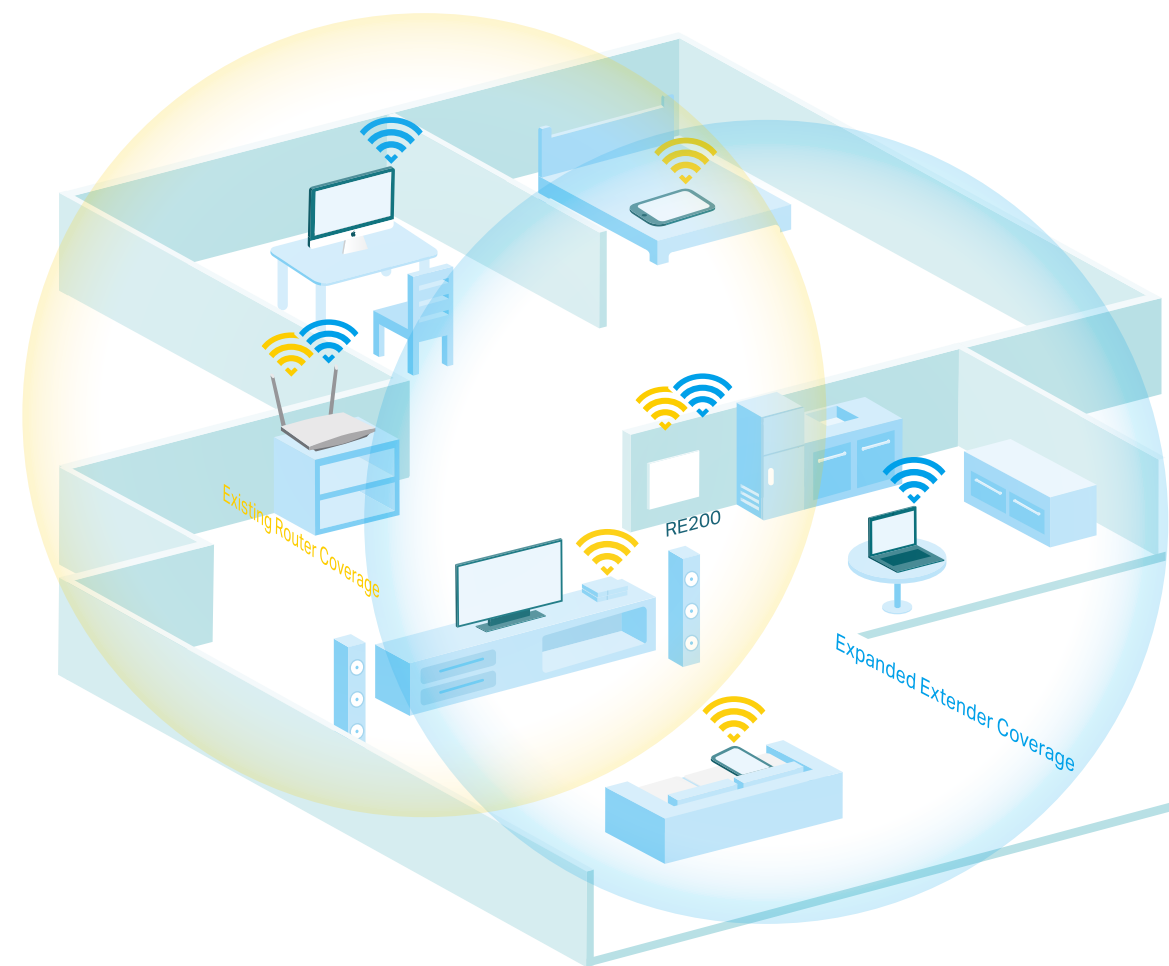
RE200
AC750 Wi-Fi
Range Extender



Highlights

Extend the Range of Your Wi-Fi Network

The AC750 Wi-Fi Range Extender connects to your router wirelessly, strengthening and expanding its signal into areas it can't reach on its own, achieving speeds of 300Mbps on the 2.4GHz band and 433Mbps on the 5GHz band.

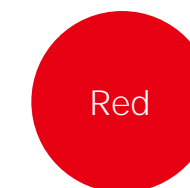


Perfect Location at a Glimpse

5b' bH''[YbhG][bU''[\h\Y'dg'mci 'ei]W_m' bX'h\Y VYgh`c WU]c b'hc]bghU'' h\Y' range extender.



Good location



Too far away from the router

Features



Ease of Use

- **Intuitive Web UI** – Ensures quick and simple installation without hassle.
- **Fast Encryption** – One-touch WPA wireless security encryption with the WPS button
- **Hassle-free Management with Tether App** – Network management is made easy with the TP-Link Tether App, available on any Android or iOS device
- **Online Upgrade** – Allows online updating on the web UI



Speed

- **Ultimate Wireless Speed** – Combined wireless speeds of up to 300Mbps (over 2.4GHz) and 433Mbps (over 5GHz)
- **Support 802.11 ac** – Provides a data transfer rate 3 times faster than 802.11n for each stream
- **MIPS 24KEc CPU** – A 575/580 MHz MIPS 24K™ CPU core makes multi-tasking easy and boosts data transfer rate

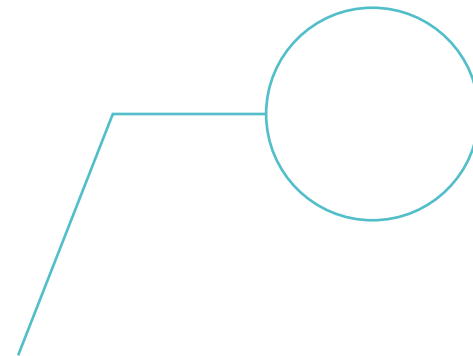


Reliability

- **Simultaneous Dual Band** – Separate Wi-Fi bands enable more devices to connect to your network without a drop in performance
- **Reliable Connection** – Three Internal antennas for optimal Wi-Fi coverage and reliable wireless connections

Hardware

- Ethernet Port: 1 10/100Mbps RJ45 Port
- Button: WPS Button, Reset Button
- Antenna: 3 Internal Antennas
- Power Consumption: 6.5W
- Dimensions (L × W × H): 110×65.8×75.2mm



For more information, please visit

<http://www.tp-link.com/en/products/details/RE200.html>

or scan the QR code left

Wireless

- Wireless Standards: IEEE 802.11a/n/ac 5GHz, IEEE 802.11b/g/n 2.4GHz
- Frequency: 2.4GHz and 5GHz
- Signal Rate: 300Mbps at 2.4GHz, 433Mbps at 5GHz
- Transmit Power: <20dBm
- Reception Sensitivity:
5GHz:
11a 6Mbps: -94dBm, 11a 54Mbps: -79dBm
11ac HT20 MCS0: -94dBm, 11ac HT20 MCS8: -73dBm
11ac HT40 MCS0: -91dBm, 11ac HT40 MCS9: -67dBm
11ac HT80 MCS0: -88dBm, 11ac HT80 MCS9: -64dBm
2.4GHz:
11g 54Mbps: -81dBm, 11n HT20 MCS7: -79dBm
11n HT40 MCS7: -76dBm
- Wireless Function: Enable/Disable Wireless Radio, Wireless Statistics
- Wireless Security: 64/128-bit WEP, WPA/WPA-PSK2 encryptions

Others

- 7 Yfhj WWhjcb
CE, FCC, RoHS
- System Requirements
Microsoft Windows 98SE, NT, 2000, XP, Vista™ or Windows 7, 8, 8.1, 10, MAC OS, NetWare, UNIX or Linux
Internet Explorer 11, Firefox 12.0, Chrome 20.0, Safari 4.0, or other Java-enabled browser
- Package Contents
AC750 Wi-Fi Range Extender RE200
Quick Installation Guide

GdYWj WWhjcbg UfYgi VYVhfc WXUb[Y k]hci hbcjW"HD!@b_g UfY[]ghfYX hfUXYa Uf_cZHD!@b_hYWbc:c []Yg 7C "z@k" C h.YfVfUbXg UbX d'fcXi WhbUa Yg UfY hfUXYa Uf_g'c'fYf []ghfYX hfUXYa Uf_g'c'ZhY]f fYgdYVWj] Y \c'XYfg"
A Ul ja i a Yi hYbXYX K]:]Vej YfU[Y'gdYWj WWhjcb]g VUgYX'cb dYfZc'fa UbVW hYghfYgi 'hg"5WWh U'K]:]Vej YfU[Y'a Umj UfmXi Y'tc'X] YfYbhYbj]fcb a YbhzVi]X]b['a UhYf]U'UbX'k]fY'Ygg]bHfZfYfVWg" A Ul ja i a 'k]fY'Ygg'gdYXX'cZi d'tc'+) \$A Vdg]g'hY'hYc'fYh]WU'XUHU'fUHY'XYf] YX Z'ca '999'ghUbXUFX', \$&%%'gdYWj WWhjcbg"5WWh U'XUHU'h'fci [\di hUbX'k]fY'Ygg'Vej YfU[Y'k]'j UfmXi Y'tc' bYHk cf_ 'Vc bX]h]cbg UbX'Ybj]fcb a YbHU'ZUW'c'fg]bW] X]b[]'c'i a Y'cZbYHk cf_ 'hfUW_zVi]X]b['a UhYf]Ug UbX'Vc bgrfi WWhjcbz bYHk cf_cj YfVUUXzUWWh U'XUHU'h'fci [\di hfUHYzUbX'k]fY'Ygg'Vej YfU[Y"HD!@b_a U_Yg'bc Yi d'fYgg'cf]a d'YX' representations or warranties about this product's compatibility with any future standards. 802.11ac 1300Mbps is approximately 3 times faster than 802.11n 450Mbps. 2.4GHz Performance Mode requires 256 QAM support on Wi-Fi client.